

# aiwa



## CDC-Z106

STEREO CAR CD RECEIVER

• TYPE: YH

**SIMPLE MANUAL**

• Replace this Service Manual with "Revision Publishing" when it is issued.

S/M Code No. 09-994-405-1T2

MANUAL  
SERVICE

# ELECTRICAL MAIN PARTS LIST - 1/4

NOTE: The characters in the suffix column indicate the part usage.

YH	REF.NO	PARTS NO.	XX. KANRI NO.	DESCRIPTION	A. SUFFIX
C	907	87-010-322-080		C-CAP,S 100P-50 CH	A
C	912	87-010-194-080		CAP, CHIP 0.047	A
C	913	87-010-196-080		CHIP CAPACITOR,0.1-25	A
C	915	87-010-196-080		CHIP CAPACITOR,0.1-25	A
C	919	87-010-315-080		C-CAP,S 27P-50 CH	A
C	917	87-010-322-080		C-CAP,S 100P-50 CH	A
C	918	87-010-322-080		C-CAP,S 100P-50 CH	A
C	914	87-010-493-040		CAP,E 0.47-50 GAS	A
C	916	87-010-553-040		CAP,E 47-16 GAS	A
C	911	87-010-555-040		CAP,E 100-10 GAS	A
C	910	87-010-555-040		CAP,E 100-10 GAS	A
C	925	87-010-178-080		CHIP CAP 1000P	A
C	927	87-010-196-080		CHIP CAPACITOR,0.1-25	A
C	920	87-010-314-080		C-CAP,S 22P-50V	A
C	921	87-010-322-080		C-CAP,S 100P-50 CH	A
D	913	87-020-465-080		DIODE,1SS133 (110MA)	A
IC	901	87-A21-203-010		C-IC,TC9323F-006	A
IC	902	88-KT1-606-080		IC,PST994D	A
Q	908	87-026-235-080		CHIP-TR,DTC114EK	A
Q	909	87-A30-289-040		C-TR,2SA1037AK(R)	A
Q	911	87-026-235-080		CHIP-TR,DTC114EK	A
SW	902	87-A91-152-010		SW,SL 1-1-2 SSSS212-11-A	A
X	901	87-A70-175-010		VIB,XTAL 4.5MHZ AT-49	A
C	204	87-010-176-080		C-CAP,S 680P-50 SL	A
C	201	87-010-178-080		CHIP CAP 1000P	A
C	208	87-010-196-080		CHIP CAPACITOR,0.1-25	A
C	203	87-010-196-080		CHIP CAPACITOR,0.1-25	A
C	205	87-010-198-080		CAP, CHIP 0.022	A
C	207	87-010-213-080		C-CAP,S 0.015-50 B	A
C	209	87-010-552-040		CAP,E 22-16 GAS	A
C	202	87-010-553-040		CAP,E 47-16 GAS	A
C	206	87-010-805-080		CAP, S 1-16	A
C	216	87-010-148-080		CAP, CHIP S 75P SL	A
C	217	87-010-194-080		CAP, CHIP 0.047	A
C	213	87-010-196-080		CHIP CAPACITOR,0.1-25	A
C	211	87-010-196-080		CHIP CAPACITOR,0.1-25	A
C	215	87-010-315-080		C-CAP,S 27P-50 CH	A
C	210	87-010-498-040		CAP,E 10-16 GAS	A
C	214	87-010-553-040		CAP,E 47-16 GAS	A
C	212	87-010-553-040		CAP,E 47-16 GAS	A
C	218	87-012-140-080		CAP 470P	A
C	228	87-010-180-080		C-CER 1500P	A
C	226	87-010-196-080		CHIP CAPACITOR,0.1-25	A
C	229	87-010-196-080		CHIP CAPACITOR,0.1-25	A
C	224	87-010-196-080		CHIP CAPACITOR,0.1-25	A
C	227	87-010-196-080		CHIP CAPACITOR,0.1-25	A
C	225	87-010-553-040		CAP,E 47-16 GAS	A
C	223	87-010-553-040		CAP,E 47-16 GAS	A
C	236	87-010-196-080		CHIP CAPACITOR,0.1-25	A
C	237	87-010-198-080		CAP, CHIP 0.022	A
C	239	87-010-494-040		CAP,E 1-50 GAS	A
C	235	87-010-498-040		CAP,E 10-16 GAS	A
C	238	87-010-498-040		CAP,E 10-16 GAS	A
C	230	87-010-553-040		CAP,E 47-16 GAS	A
C	231	87-010-553-040		CAP,E 47-16 GAS	A
C	242	87-010-184-080		CHIP CAPACITOR 3300P(K)	A
C	241	87-010-184-080		CHIP CAPACITOR 3300P(K)	A
C	243	87-010-186-080		CAP,CHIP 4700P	A
C	244	87-010-188-080		CAP,CHIP 6800P	A
C	240	87-010-196-080		CHIP CAPACITOR,0.1-25	A
C	247	87-010-197-080		CAP, CHIP 0.01 DM	A
C	246	87-010-197-080		CAP, CHIP 0.01 DM	A
C	249	87-010-321-080		CHIP CAPACITOR,82P(J)	A
C	248	87-010-321-080		CHIP CAPACITOR,82P(J)	A
C	245	87-010-322-080		C-CAP,S 100P-50 CH	A
C	255	87-010-196-080		CHIP CAPACITOR,0.1-25	A
C	257	87-010-553-040		CAP,E 47-16 GAS	A
C	250	87-010-553-040		CAP,E 47-16 GAS	A
C	254	87-010-553-040		CAP,E 47-16 GAS	A
C	251	87-012-153-080		C-CAP,S 120P-50 CH	A
C	253	87-012-153-080		C-CAP,S 120P-50 CH	A
C	258	87-012-153-080		C-CAP,S 120P-50 CH	A
C	259	87-012-153-080		C-CAP,S 120P-50 CH	A
C	266	87-010-494-040		CAP,E 1-50 GAS	A
C	264	87-010-494-040		CAP,E 1-50 GAS	A
C	268	87-010-553-040		CAP,E 47-16 GAS	A
C	269	87-010-553-040		CAP,E 47-16 GAS	A
C	263	87-012-153-080		C-CAP,S 120P-50 CH	A
C	262	87-012-153-080		C-CAP,S 120P-50 CH	A
C	270	87-010-196-080		CHIP CAPACITOR,0.1-25	A
C	273	87-010-315-080		C-CAP,S 27P-50 CH	A
C	275	87-010-315-080		C-CAP,S 27P-50 CH	A
C	272	87-010-315-080		C-CAP,S 27P-50 CH	A
C	274	87-010-315-080		C-CAP,S 27P-50 CH	A
C	271	87-010-315-080		C-CAP,S 27P-50 CH	A
C	276	87-010-315-080		C-CAP,S 27P-50 CH	A

# ELECTRICAL MAIN PARTS LIST - 2/4

CON	201	87-A60-859-010	CONN,12P TKC-F12X-K1	A
CON	202	87-A60-860-010	CONN,14P TKC-F14X-K1	A
D	201	87-020-465-080	DIODE,1SS133 (110MA)	A
D	202	87-A40-344-080	ZENER,MTZJ6.2C	A
IC	203	87-017-801-080	IC,TA2058F	A
IC	205	87-027-842-080	IC,NJM2904M	A
IC	202	87-070-336-010	IC,TC9284BF	A
IC	204	87-A20-712-040	C-IC,BA6417F	A
IC	201	87-A21-204-010	C-IC,TA2065F	A
L	201	87-003-149-080	COIL,47UH	A
Q	206	87-026-235-080	CHIP-TR,DTC114EK	A
Q	201	87-A30-289-040	C-TR,2SA1037AK(R)	A
Q	205	87-A30-289-040	C-TR,2SA1037AK(R)	A
SFR	202	87-024-432-080	SFR,4.7K RH063EC	A
SFR	201	87-024-437-080	SFR100K,RH063EC	A
X	201	81-592-641-010	VIB,CER 16.93MHZ	A
C	101	87-010-196-080	CHIP CAPACITOR,0.1-25	A
C	109	87-010-494-040	CAP,E 1-50 GAS	A
C	108	87-010-494-040	CAP,E 1-50 GAS	A
C	105	87-010-498-040	CAP,E 10-16 GAS	A
C	104	87-010-498-040	CAP,E 10-16 GAS	A
C	103	87-012-155-080	C-CAP 180P-50CH	A
C	119	87-010-196-080	CHIP CAPACITOR,0.1-25	A
C	114	87-010-197-080	CAP,CHIP 0.01 DM	A
C	115	87-010-495-040	CAP,E 2.2-50 GAS	A
C	127	87-010-197-080	CAP,CHIP 0.01 DM	A
C	120	87-010-197-080	CAP,CHIP 0.01 DM	A
C	126	87-010-197-080	CAP,CHIP 0.01 DM	A
C	125	87-012-155-080	C-CAP 180P-50CH	A
C	122	87-012-365-080	C-CAP,S 0.027-25VBK	A
C	121	87-012-365-080	C-CAP,S 0.027-25VBK	A
C	280	87-010-197-080	CAP,CHIP 0.01 DM	A
C	880	87-010-182-080	C-CAP,S 2200P-50 B	A
C	881	87-010-182-080	C-CAP,S 2200P-50 B	A
C	882	87-010-182-080	C-CAP,S 2200P-50 B	A
D	101	88-KC4-607-080	PROTECTOR,DSP-301N-A21F	A
L	101	87-003-143-080	COIL 4.7 UH	A
L	102	8Z-KT1-619-010	COIL,68MH K7-D	A
L	202	87-A50-079-080	COIL,22UH (CECS)	A
L	401	87-005-849-080	COIL,10UH(CECS)	A
Q	101	87-026-235-080	CHIP-TR,DTC114EK	A
Q	104	87-026-235-080	CHIP-TR,DTC114EK	A
Q	103	87-A30-289-040	C-TR,2SA1037AK(R)	A
Q	102	87-A30-289-040	C-TR,2SA1037AK(R)	A
Q	105	89-324-122-080	TR,2SC2412K	A
Q	106	89-324-122-080	TR,2SC2412K	A
Q	111	87-026-235-080	CHIP-TR,DTC114EK	A
Q	110	87-A30-289-040	C-TR,2SA1037AK(R)	A
TU	101	8Z-KT1-631-010	TU UNIT,FAE347-A02	A
C	407	87-010-494-040	CAP,E 1-50 GAS	A
C	408	87-010-494-040	CAP,E 1-50 GAS	A
C	401	87-010-494-040	CAP,E 1-50 GAS	A
C	406	87-010-494-040	CAP,E 1-50 GAS	A
C	405	87-010-494-040	CAP,E 1-50 GAS	A
C	402	87-010-494-040	CAP,E 1-50 GAS	A
C	409	87-010-498-040	CAP,E 10-16 GAS	A
C	412	87-010-494-040	CAP,E 1-50 GAS	A
C	411	87-010-494-040	CAP,E 1-50 GAS	A
C	419	87-010-498-040	CAP,E 10-16 GAS	A
C	417	87-010-498-040	CAP,E 10-16 GAS	A
C	413	87-010-498-040	CAP,E 10-16 GAS	A
C	418	87-010-498-040	CAP,E 10-16 GAS	A
C	415	87-010-498-040	CAP,E 10-16 GAS	A
C	414	87-010-498-040	CAP,E 10-16 GAS	A
C	416	87-010-498-040	CAP,E 10-16 GAS	A
C	410	87-010-498-040	CAP,E 10-16 GAS	A
C	420	87-010-221-080	CAP,ELECT 470-10V	A
C	424	87-010-494-040	CAP,E 1-50 GAS	A
C	421	87-010-494-040	CAP,E 1-50 GAS	A
C	423	87-010-494-040	CAP,E 1-50 GAS	A
C	422	87-010-494-040	CAP,E 1-50 GAS	A
C	429	87-010-498-040	CAP,E 10-16 GAS	A
C	425	87-012-140-080	CAP 470P	A
C	427	87-012-140-080	CAP 470P	A
C	428	87-012-140-080	CAP 470P	A
C	426	87-012-140-080	CAP 470P	A
C	432	87-010-184-080	CHIP CAPACITOR 3300P(K)	A
C	431	87-010-184-080	CHIP CAPACITOR 3300P(K)	A
C	439	87-010-196-080	CHIP CAPACITOR,0.1-25	A
C	434	87-010-198-080	CAP,CHIP 0.022	A
C	433	87-010-198-080	CAP,CHIP 0.022	A
C	430	87-010-498-040	CAP,E 10-16 GAS	A
C	435	87-A11-177-080	C-CAP,S 0.15-16 K B	A
C	437	87-A11-177-080	C-CAP,S 0.15-16 K B	A
C	438	87-A11-177-080	C-CAP,S 0.15-16 K B	A
C	436	87-A11-177-080	C-CAP,S 0.15-16 K B	A
D	401	87-020-465-080	DIODE,1SS133 (110MA)	A
IC	401	8Z-KT1-622-010	C-IC,LC75374E	A
Q	401	87-A30-279-040	C-TR,DTC314TK	A
Q	402	87-A30-279-040	C-TR,DTC314TK	A
Q	403	87-A30-279-040	C-TR,DTC314TK	A
Q	404	87-A30-279-040	C-TR,DTC314TK	A

# ELECTRICAL MAIN PARTS LIST - 3/4

C	555	87-010-178-080	CHIP CAP 1000P	A
C	558	87-010-178-080	CHIP CAP 1000P	A
C	557	87-010-178-080	CHIP CAP 1000P	A
C	556	87-010-178-080	CHIP CAP 1000P	A
C	552	87-010-494-040	CAP,E 1-50 GAS	A
C	551	87-010-494-040	CAP,E 1-50 GAS	A
C	553	87-010-494-040	CAP,E 1-50 GAS	A
C	554	87-010-494-040	CAP,E 1-50 GAS	A
C	559	87-010-498-040	CAP,E 10-16 GAS	A
C	562	87-010-196-080	CHIP CAPACITOR,0.1-25	A
C	563	87-010-497-040	CAP,E 4.7-35 GAS	A
C	560	8Z-KC1-630-090	CAP,E 3300U-16 M 105 EX	A
IC	551	8Z-KTG-622-010	IC,TA8252H	A
		8Z-KC1-621-010	FUSE,15A 32V	A
C	856	87-010-178-080	CHIP CAP 1000P	A
C	857	87-010-178-080	CHIP CAP 1000P	A
C	859	87-010-178-080	CHIP CAP 1000P	A
C	858	87-010-178-080	CHIP CAP 1000P	A
C	855	87-010-178-080	CHIP CAP 1000P	A
C	854	87-010-178-080	CHIP CAP 1000P	A
C	853	87-010-178-080	CHIP CAP 1000P	A
C	852	87-010-182-080	C-CAP,S 2200P-50 B	A
C	851	87-010-197-080	CAP, CHIP 0.01 DM	A
C	860	87-010-178-080	CHIP CAP 1000P	A
C	866	87-010-194-080	CAP, CHIP 0.047	A
C	867	87-010-237-080	CAP, ELECT 1000-16V	A
C	862	87-010-498-040	CAP,E 10-16 GAS	A
C	864	87-010-498-040	CAP,E 10-16 GAS	A
C	861	87-010-498-040	CAP,E 10-16 GAS	A
C	868	87-010-553-040	CAP,E 47-16 GAS	A
C	869	87-010-553-040	CAP,E 47-16 GAS	A
C	865	87-010-555-080	CAP,E 100-10 GAS	A
C	873	87-010-182-080	C-CAP,S 2200P-50 B	A
C	871	87-010-182-080	C-CAP,S 2200P-50 B	A
D	855	87-017-932-080	ZENER,MTJ6.2B	A
D	852	87-070-136-080	ZENER,MTZJ5.1B	A
D	858	87-070-136-080	ZENER,MTZJ5.1B	A
D	856	87-A40-189-080	DIODE,1SR139-400	A
D	853	87-A40-523-080	ZENER,MTZJ9.1B	A
D	854	87-A40-624-080	ZENER,MTZJ10A	A
D	851	87-A40-654-010	DIODE,DSA17C	A
D	857	87-A40-654-010	DIODE,DSA17C	A
D	861	87-A40-189-080	DIODE,1SR139-400	A
L	851	87-003-143-080	COIL 4.7 UH	A
L	852	87-003-149-080	COIL,47UH	A
L	853	8Z-KT1-615-010	FLTR,AMORPHOUS -CHOKE	A
Q	204	87-A30-298-010	TR,2SD2396	A
Q	854	87-026-235-080	CHIP-TR,DTC114EK	A
Q	852	87-026-235-080	CHIP-TR,DTC114EK	A
Q	858	87-A30-298-010	TR,2SD2396	A
Q	853	87-A30-299-080	TR,2SB1326	A
Q	851	87-A30-300-080	TR,2SB1277	A
Q	859	87-A30-301-080	TR,2SD1862	A
Q	855	87-A30-302-040	C-TR,2SD1758-F5	A
Q	860	87-A30-289-040	C-TR,2SA1037AK(R)	A
Q	861	89-324-122-080	TR,2SC2412K	A
CN	1003	87-A60-912-010	CONN,3P V IMSA-9202B-1	A
CON	851	8Z-KT1-611-010	CONN,16P CAM-B51	A
J	101	8Z-KT1-614-010	ANT,AW-002	A
J	301	87-A60-249-010	JACK,MOJ-B32	A
J	751	88-KTA-605-010	JACK,PIN 2P V-TYPE	A
C	802	87-010-196-080	CHIP CAPACITOR,0.1-25	A
C	801	87-010-197-080	CAP, CHIP 0.01 DM	A
IC	801	88-KTD-602-010	C-IC,TC9297F	A
LCD	801	8Z-KCG-605-010	LCD,ZKC-G	A
PL	806	8Z-KT1-641-010	LAMP,T-3	A
PL	801	8Z-KT1-641-010	LAMP,T-3	A
PL	807	8Z-KT1-641-010	LAMP,T-3	A
PL	803	8Z-KT1-641-010	LAMP,T-3	A
PL	808	8Z-KT1-641-010	LAMP,T-3	A
PL	805	8Z-KT1-641-010	LAMP,T-3	A
PL	804	8Z-KT1-641-010	LAMP,T-3	A
PL	802	8Z-KT1-641-010	LAMP,T-3	A
SW	802	87-036-251-080	SW,T CT 6X3.5 160	A
SW	806	87-036-251-080	SW,T CT 6X3.5 160	A
SW	807	87-036-251-080	SW,T CT 6X3.5 160	A
SW	803	87-036-251-080	SW,T CT 6X3.5 160	A
SW	808	87-036-251-080	SW,T CT 6X3.5 160	A
SW	805	87-036-251-080	SW,T CT 6X3.5 160	A
SW	804	87-036-251-080	SW,T CT 6X3.5 160	A
SW	801	87-036-251-080	SW,T CT 6X3.5 160	A
SW	809	87-036-251-080	SW,T CT 6X3.5 160	A
SW	812	87-036-251-080	SW,T CT 6X3.5 160	A
SW	817	87-036-251-080	SW,T CT 6X3.5 160	A
SW	811	87-036-251-080	SW,T CT 6X3.5 160	A
SW	818	87-036-251-080	SW,T CT 6X3.5 160	A
SW	813	87-036-251-080	SW,T CT 6X3.5 160	A
SW	819	87-036-251-080	SW,T CT 6X3.5 160	A
SW	815	87-036-251-080	SW,T CT 6X3.5 160	A
SW	810	87-036-251-080	SW,T CT 6X3.5 160	A
SW	814	87-036-251-080	SW,T CT 6X3.5 160	A
SW	816	87-036-251-080	SW,T CT 6X3.5 160	A

ELECTRICAL MAIN PARTS LIST - 4/4

SW	820	87-036-251-080	SW,T	CT	6X3.5	160	A.....
SW	821	87-036-251-080	SW,T	CT	6X3.5	160	A.....
SW	822	87-036-251-080	SW,T	CT	6X3.5	160	A.....

# MECHANICAL PARTS LIST - 1/1

NOTE: The characters in the suffix column indicate the part usage.

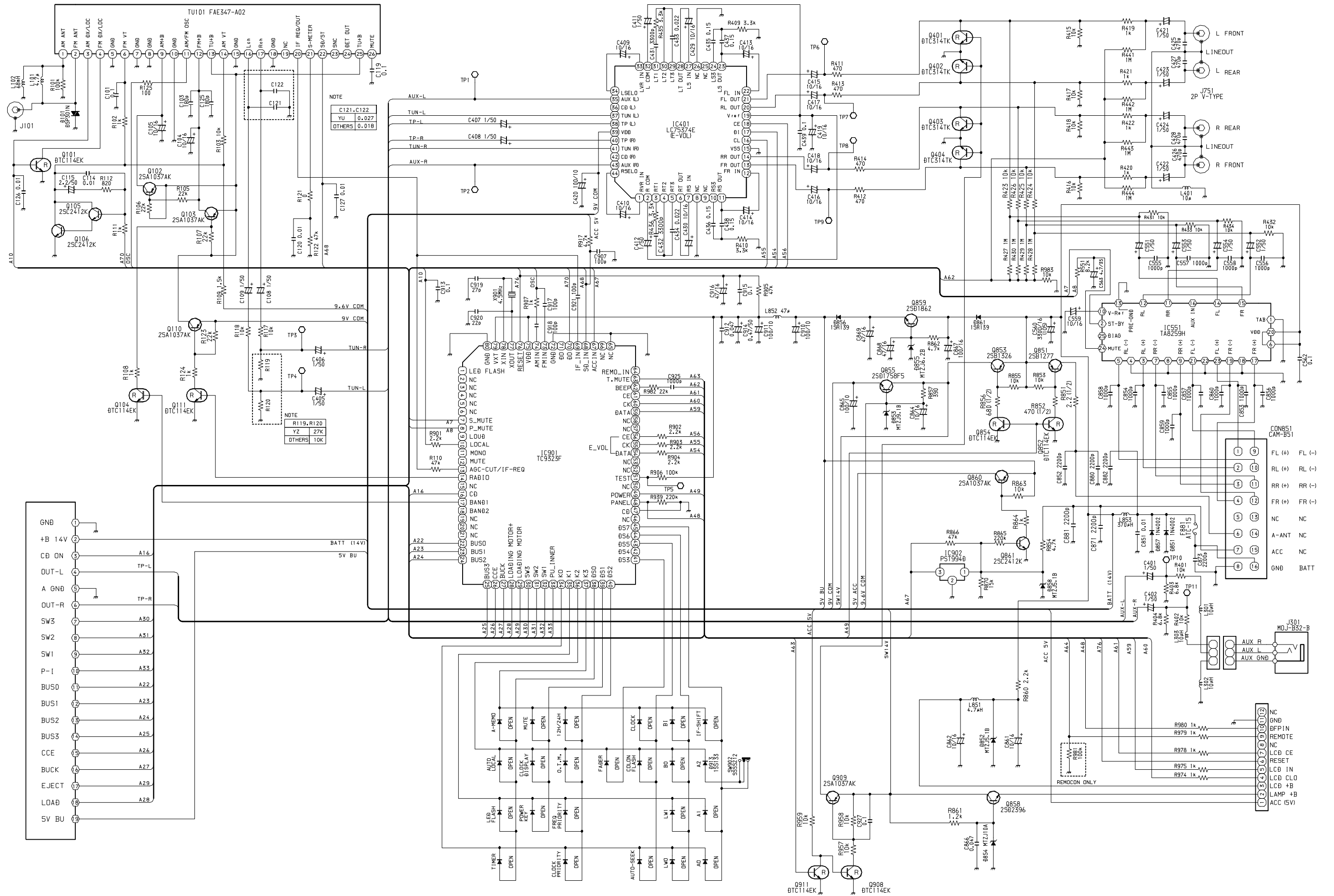
REF.NO	PARTS NO.	XX KANRI NO.	DESCRIPTION	SUFFIX
				A.....
	8Z-KC3-003-010		RING, OVAL T-C	A.....
	8Z-KCH-001-010		CABI, FRONT -C17	A.....
	8Z-KCH-002-010		WINDOW, LCD -C17	A.....
	8Z-KCH-010-010		CABI, TRIM -C17	A.....
	8Z-KC1-006-010		BTN, P.SET -C	A.....
	8Z-KC1-007-010		BTN, +/- -C	A.....
	8Z-KC1-008-010		BTN, SEL -C	A.....
	8Z-KC1-009-010		BTN, MUTE -C	A.....
	8Z-KC1-010-010		BTN, H-BASS -C	A.....
	8Z-KC1-011-010		BTN, U/D -C	A.....
	8Z-KC2-004-010		BTN, PWR -C2	A.....
	8Z-KC2-005-010		BTN, EJ -C2	A.....
	8Z-KC5-019-010		BTN, M. INF -C	A.....
	8Z-KC5-020-010		HLDR, M. INF -C	A.....
	8Z-KCG-002-010		BTN, TETRA BADC -C	A.....
	8Z-KCG-007-010		BTN, T/M IN -C	A.....
	8Z-KCH-011-010		BTN, RESET	A.....
	86-ZM2-278-010		W-P, 1.36-4-0.2 SLT	A.....
	8Z-KC1-211-010		COVER, TOP -C	A.....
	8Z-KC1-212-010		COVER, BOTTOM -C	A.....
	8Z-KC1-213-010		CHAS, SIDE L -C	A.....
	8Z-KC1-214-010		CHAS, SIDE R -C	A.....
	8Z-KC1-219-010		HLDR, TR -C	A.....
	8Z-KC1-249-010		COVER, DUST F-C	A.....
	8Z-KC1-255-010		HLDR, TR -CA	A.....
	8Z-KC2-202-010		HLDR, LCD -C2	A.....
	8Z-KC2-211-010		CASE, LCD LENS -C2	A.....
	8Z-KC2-212-010		LENS, LCD -C2	A.....
	8Z-KC2-213-010		LENS, L -C2	A.....
	8Z-KC2-214-010		LENS, R -C2	A.....
	8Z-KC2-217-010		HLDR, JACK -C2	A.....
	8Z-KC3-201-010		COVER, CD BLIND -C	A.....
	8Z-KC7-201-010		COVER, ISO BLIND -C	A.....
	8Z-KCG-201-010		CHAS, FRONT -C16	A.....
	8Z-KCH-202-010		HLDR, P-IC -C17	A.....
	8Z-KCH-211-010		HLDR, AUX	A.....
	8Z-KCH-215-010		HLDR, PWB -C17	A.....
	8Z-KT1-236-010		CAP, LAMP BLU	A.....
	8Z-KT1-237-010		CAP, LAMP GRN	A.....
	87-251-073-410		SCREW, U+2.6-6	A.....
	87-251-075-410		U+2.6-10	A.....
	87-251-096-410		U+3-10	A.....
	87-432-903-010		WASHER, WTE 2.6	A.....
	87-B10-259-010		UT2+3.0-10.0 W/O SLOT (BH TAP)	A.....
	8Z-KC1-251-010		S-SCREW, TH2.6-4.0-0.8	A.....
	8Z-KC1-254-010		S-SCREW, PT 2*5 BH+ BLK	A.....

# ACCESSORIES / PACKAGE LIST - 1/1

NOTE: The characters in the suffix column indicate the part usage.

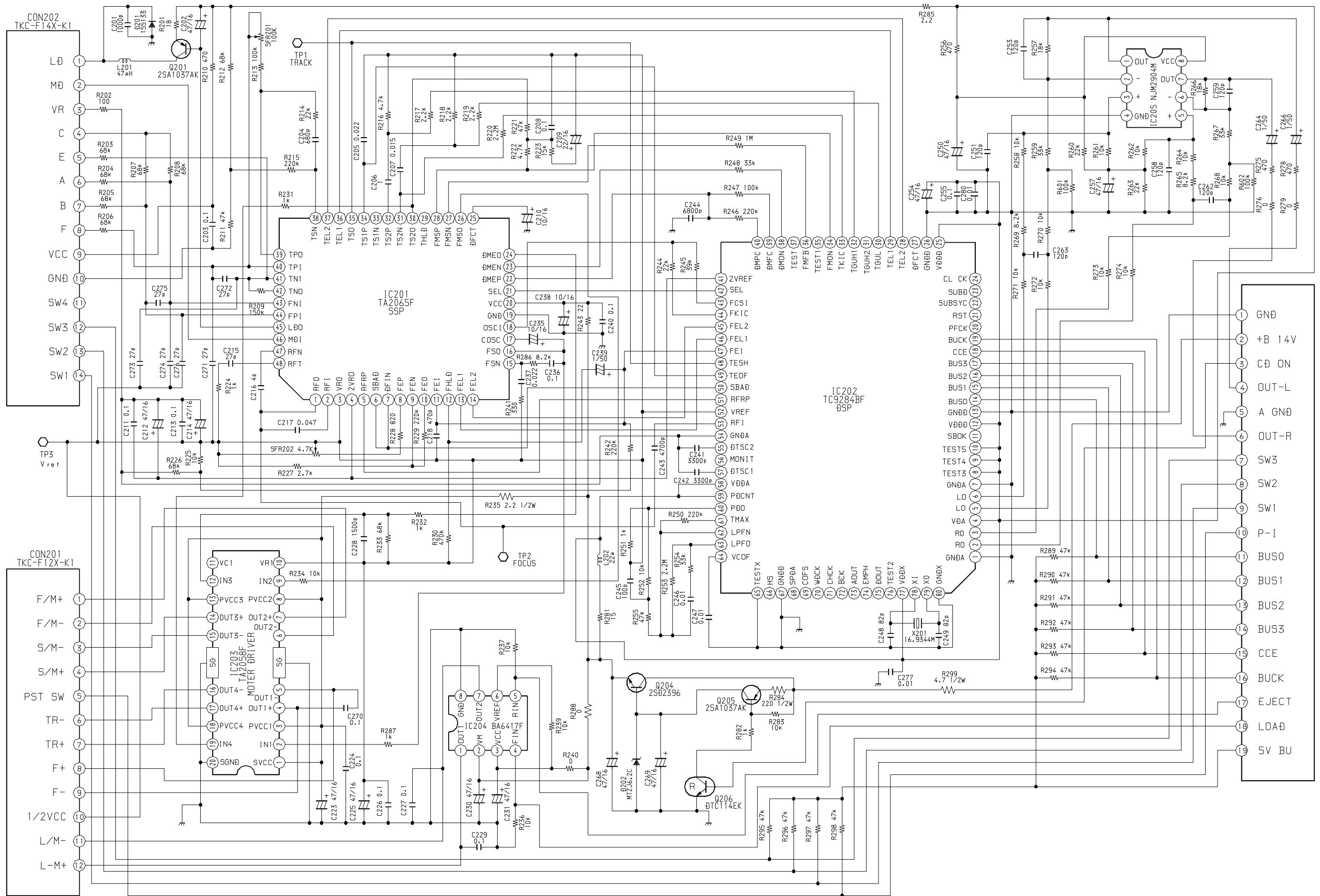
REF.NO	PARTS NO.	NO.	DESCRIPTION	SUFFIX
	8Z-KCH-901-110	IB, YU(3L) 106		.....
	8Z-KCH-902-010	IB, INST, YU (3L)106		.....
	8Z-KCH-905-010	IB, YH (E CK CH)106		A.....
	8Z-KCH-906-010	IB, INST, YH (E CK CH)106		A.....
	87-B10-141-010	NUT, 5 TYPE-2		A.....
	87-B10-145-010	W-SPR, 5.3-8.5-1.5		A.....
	8Z-KC1-231-010	HLDR, HALF -C		A.....
	8Z-KC1-232-010	KEY, REMOVE -C		A.....
	8Z-KC1-235-010	HLDR, REAR MTG		A.....
	8Z-KC1-250-010	S-SCREW, HEXAGON		A.....
	8Z-KT1-616-010	CONN ASSY, 16P B52		A.....
*	87-B10-143-010	UT1+5-15 W/O SLOT		A.....
*	8Z-KC1-244-010	S-SCREW, 5*6 TH+ TAPPING ST		A.....

# SCHEMATIC DIAGRAM - 1 (MAIN)

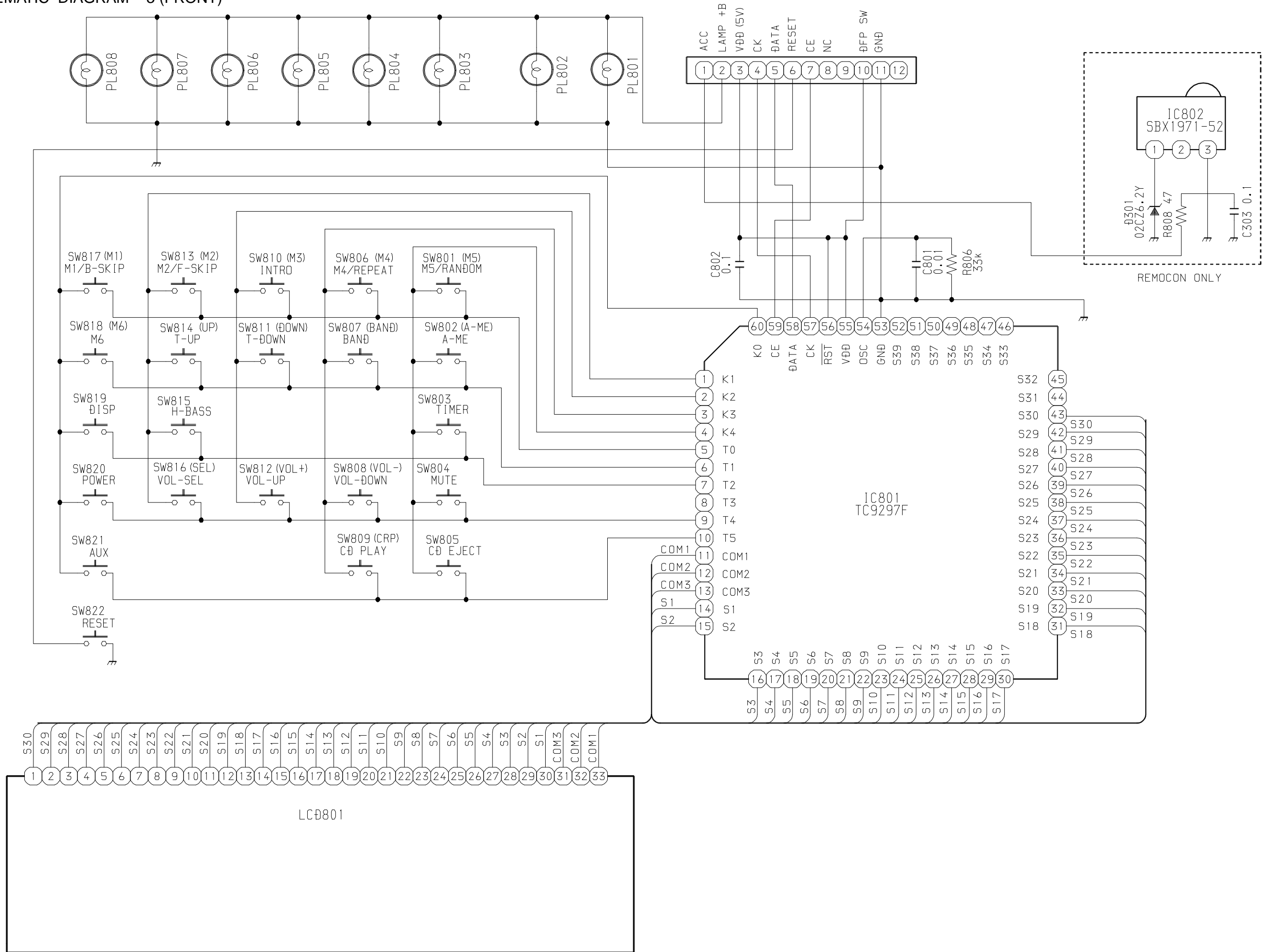




# SCHEMATIC DIAGRAM - 2 (MAIN CD)



SCHEMATIC DIAGRAM - 3 (FRONT)



サービス技術ニュース	
番号	連絡内容
G- -	
G- -	
G- -	

**アイワ株式会社**  
**AIWA CO.,LTD.**

9630469

Tokyo Japan