

# SCHEMATIC DIAGRAM

1

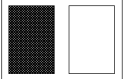
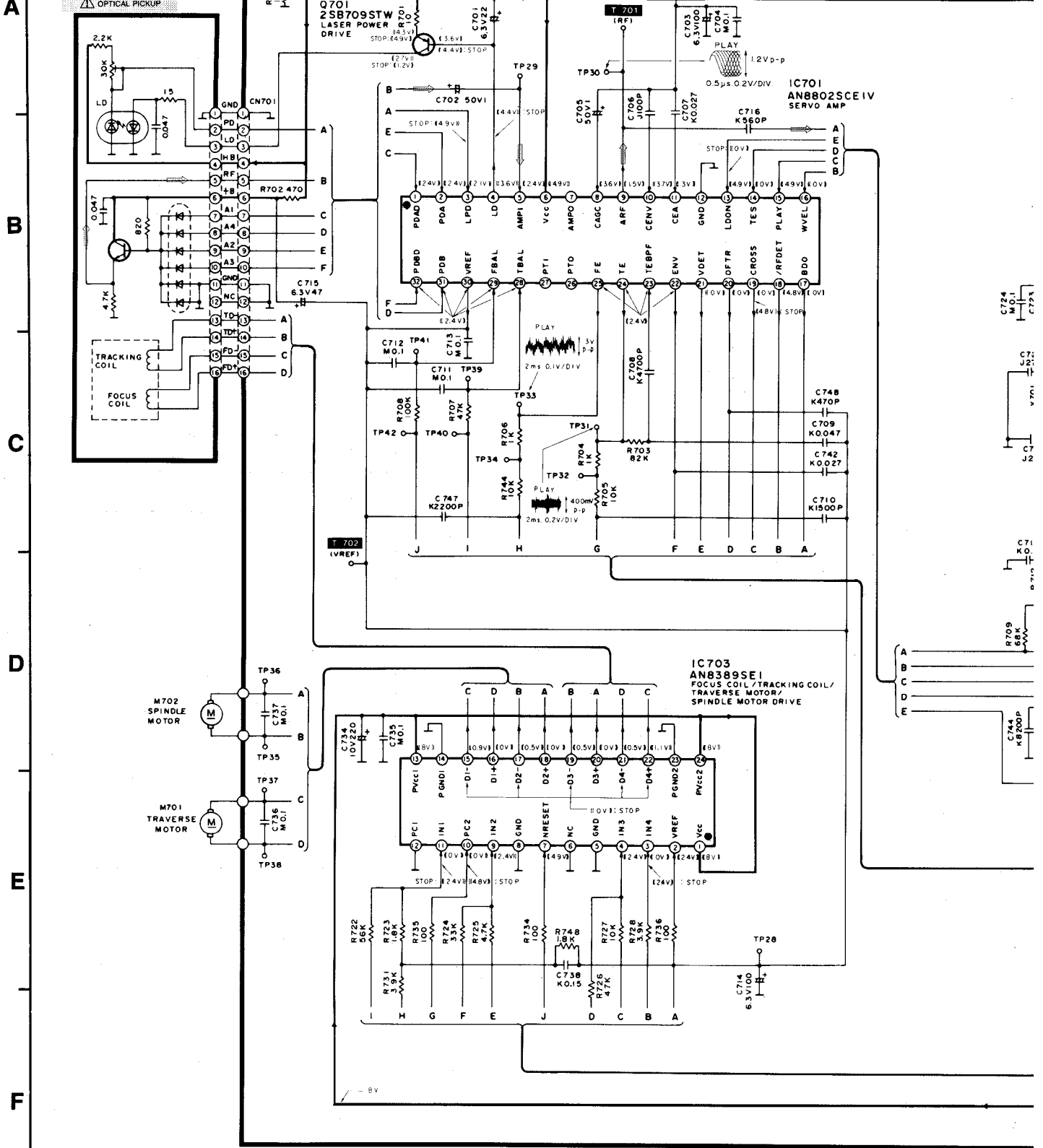
2

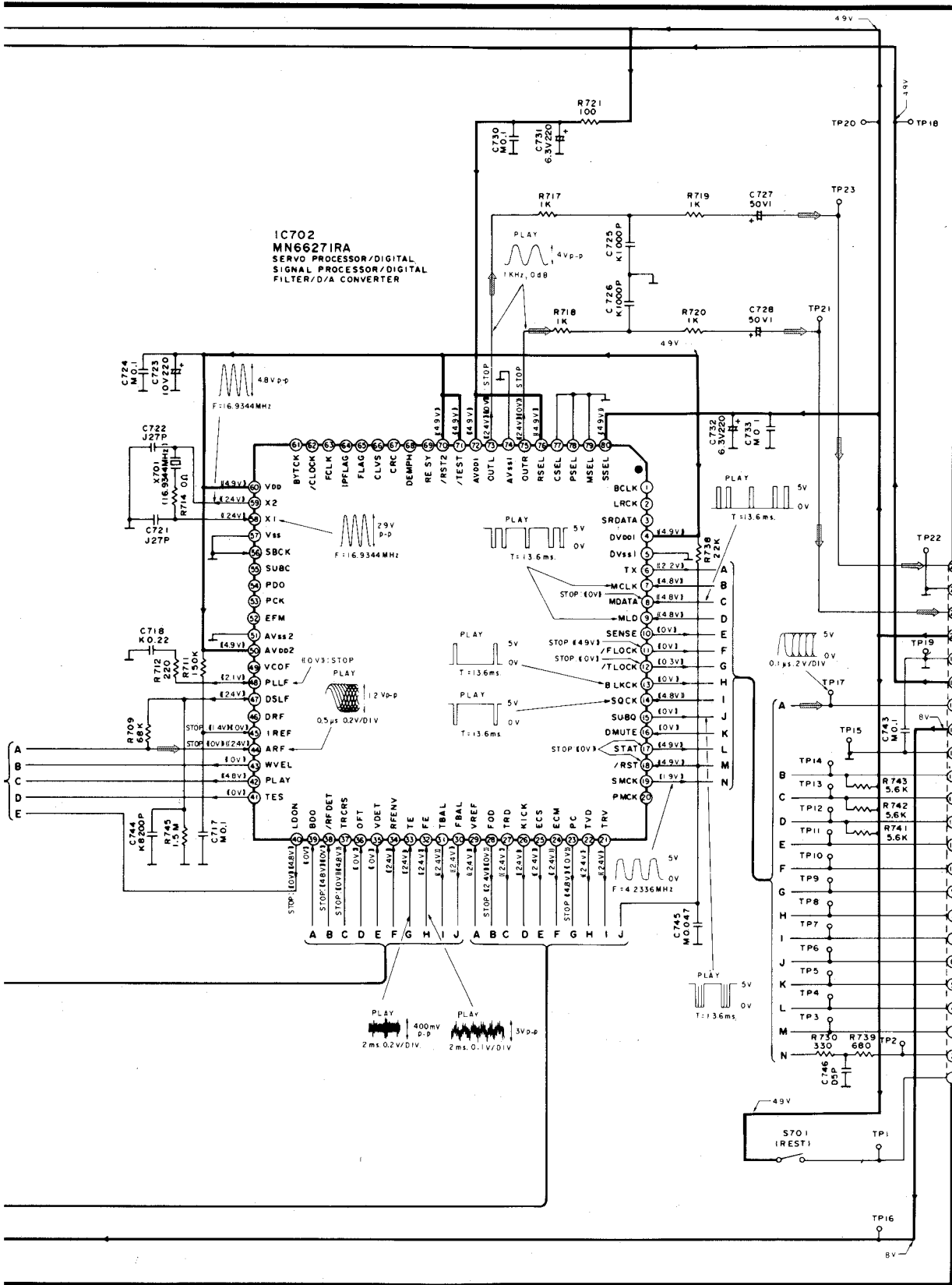
3

4

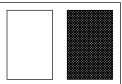
5

## A SERVO CIRCUIT

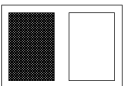
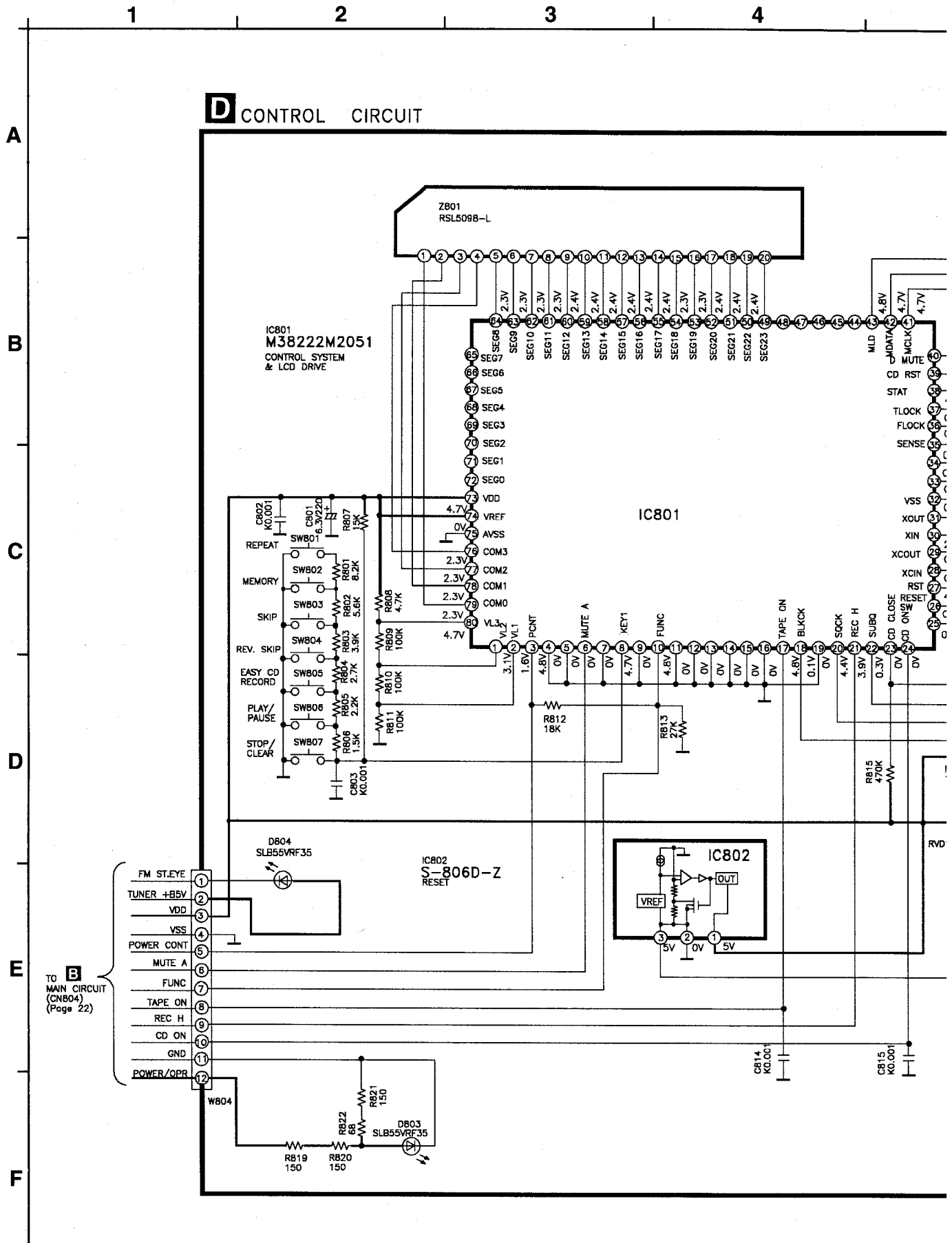




CONNECTOR CIRCUIT (CN702) (Page 1)



# SCHEMATIC DIAGRAM



5

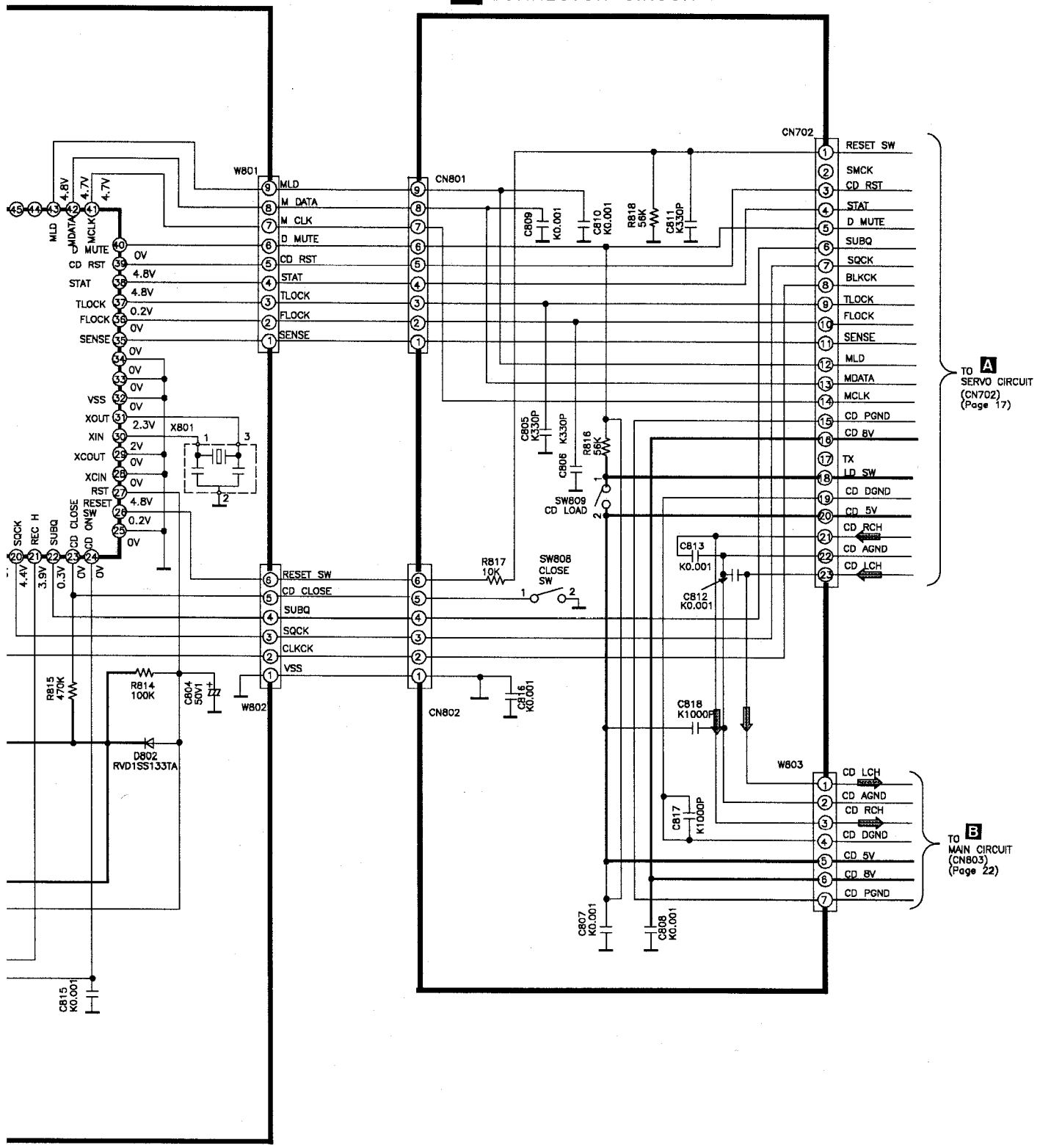
6

7

8

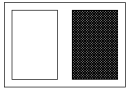
9

### E CONNECTOR CIRCUIT



TO **A** SERVO CIRCUIT (CN702) (Page 17)

TO **B** MAIN CIRCUIT (CN803) (Page 22)



SCHEMATIC DIAGRAM

1 2 3 4 5

A

B

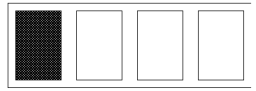
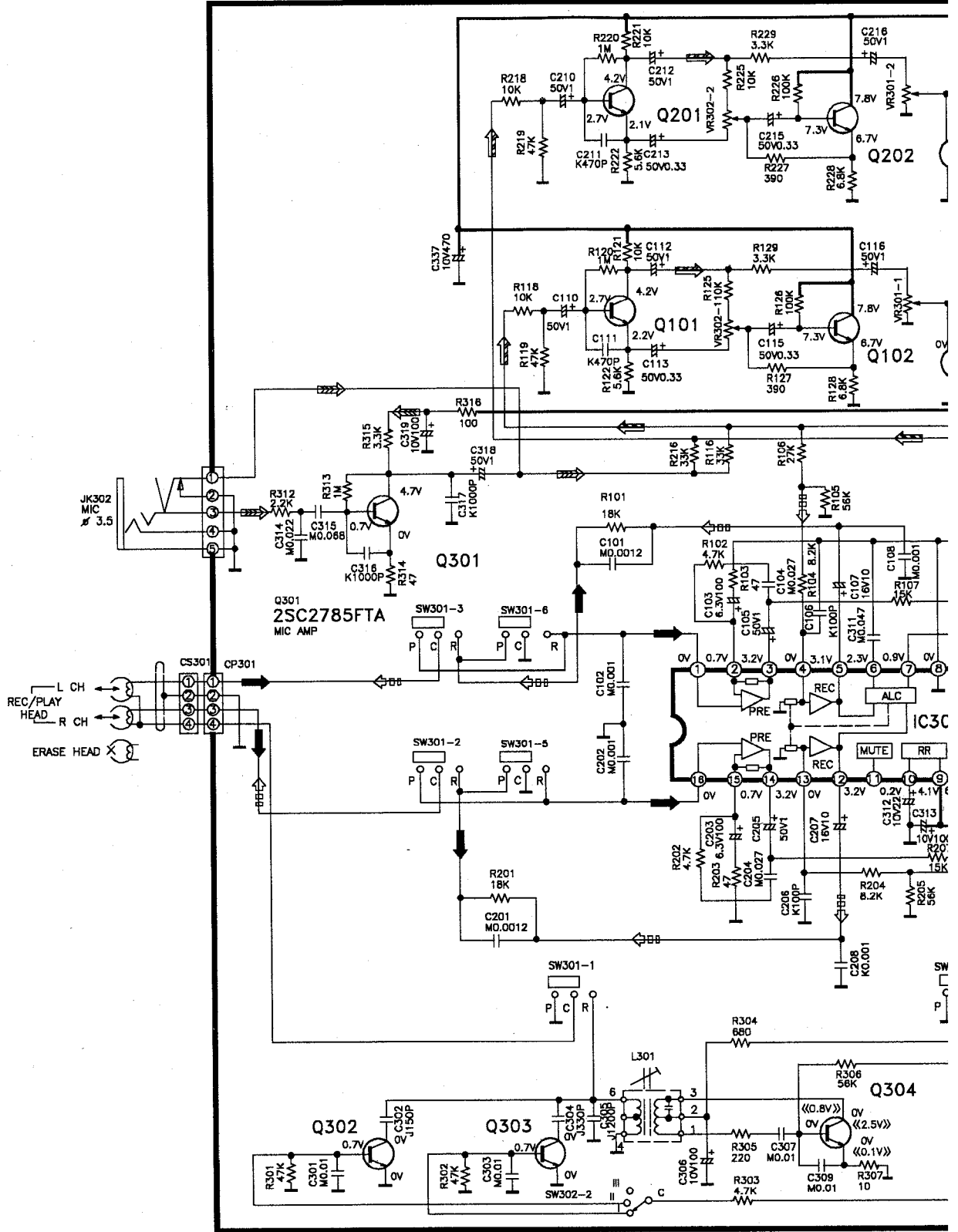
C

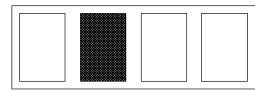
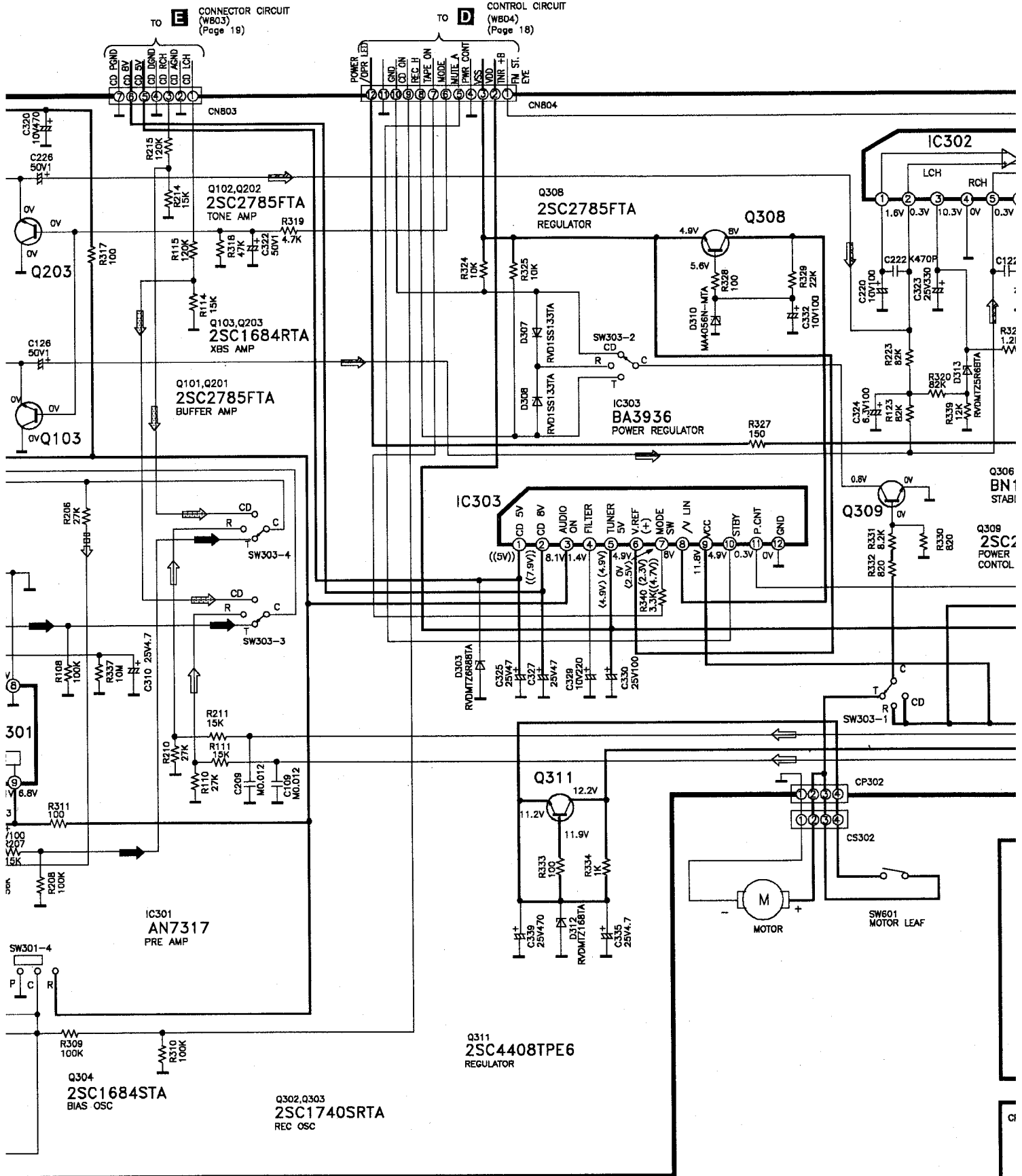
D

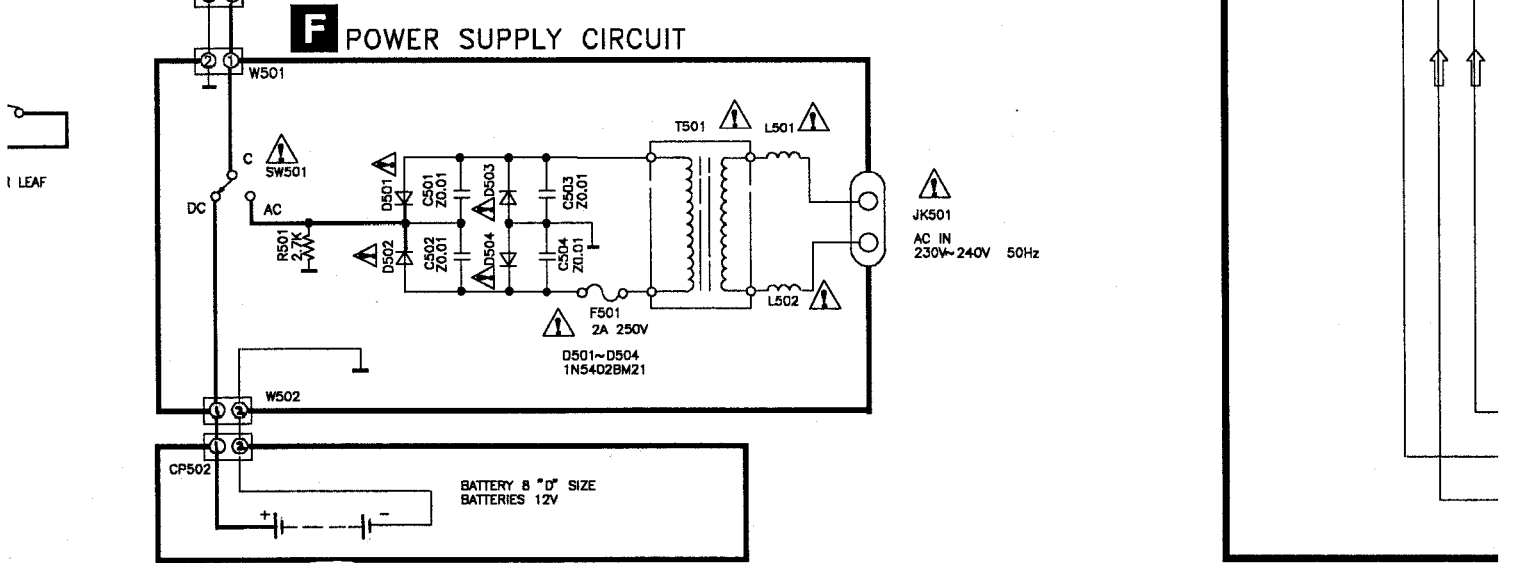
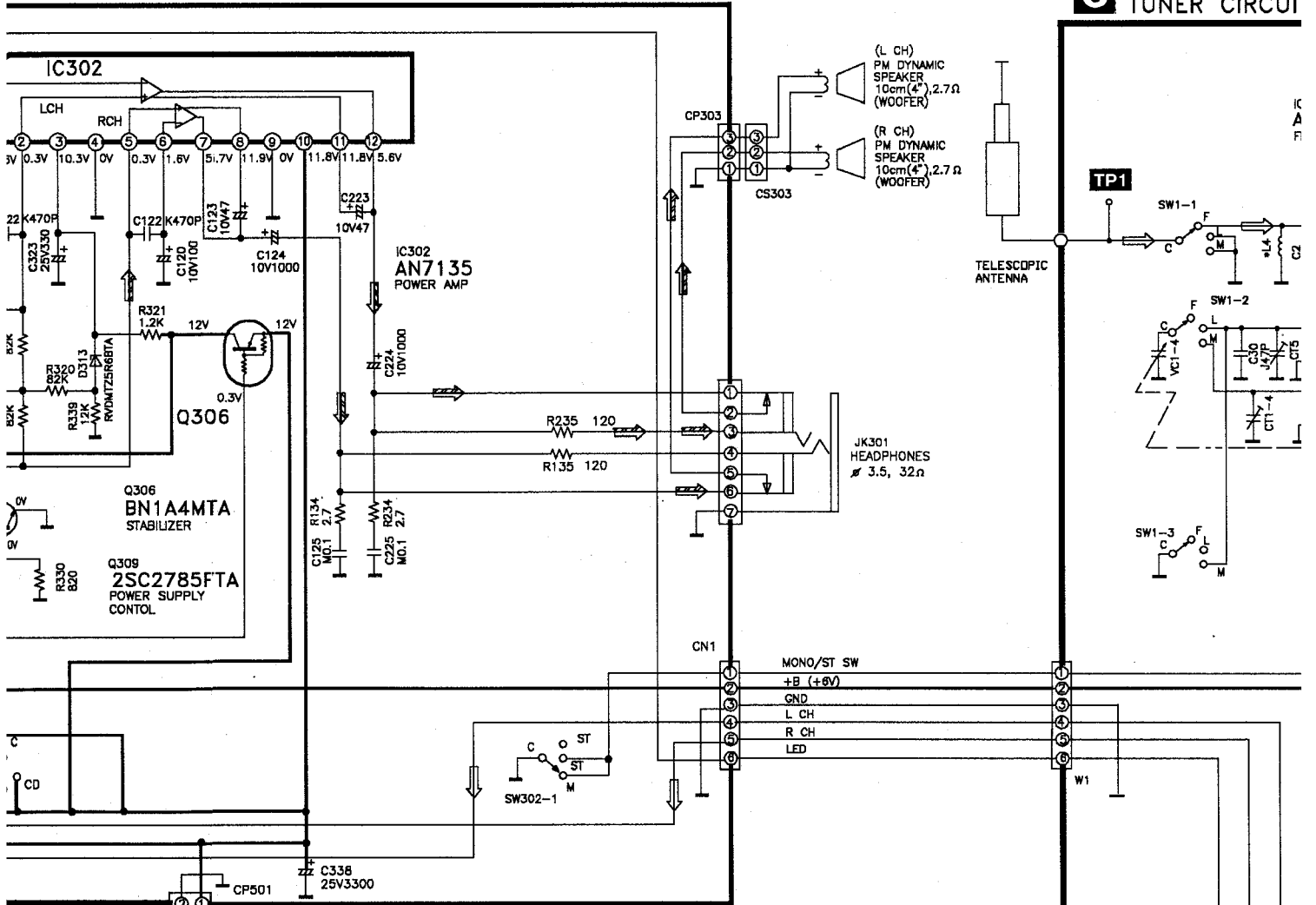
E

F

B MAIN CIRCUIT







TUNER CIRCUIT

